

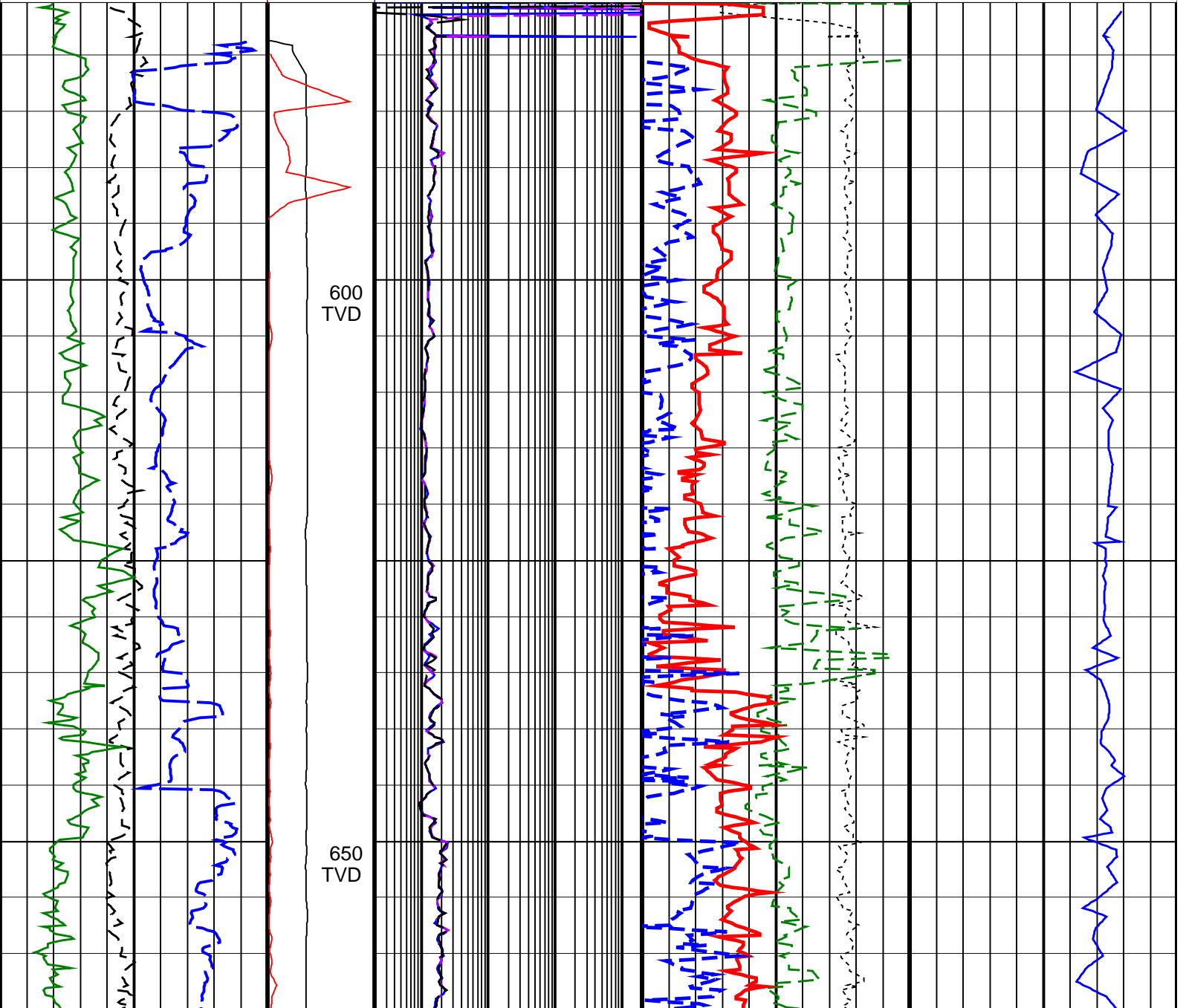
CBA-F27 LWD VISION RT 500TVD

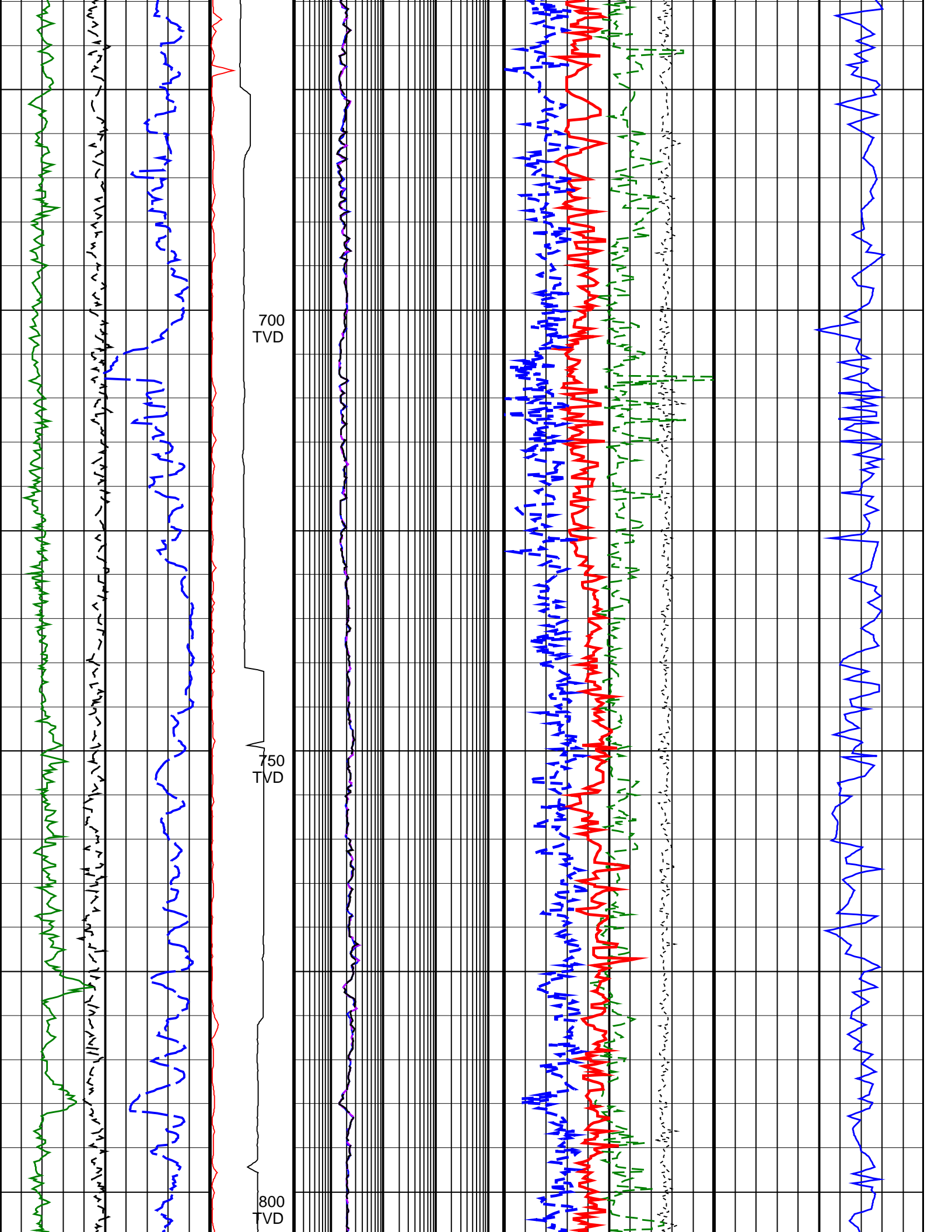
Format: VISION SERVICE RT 500TVD

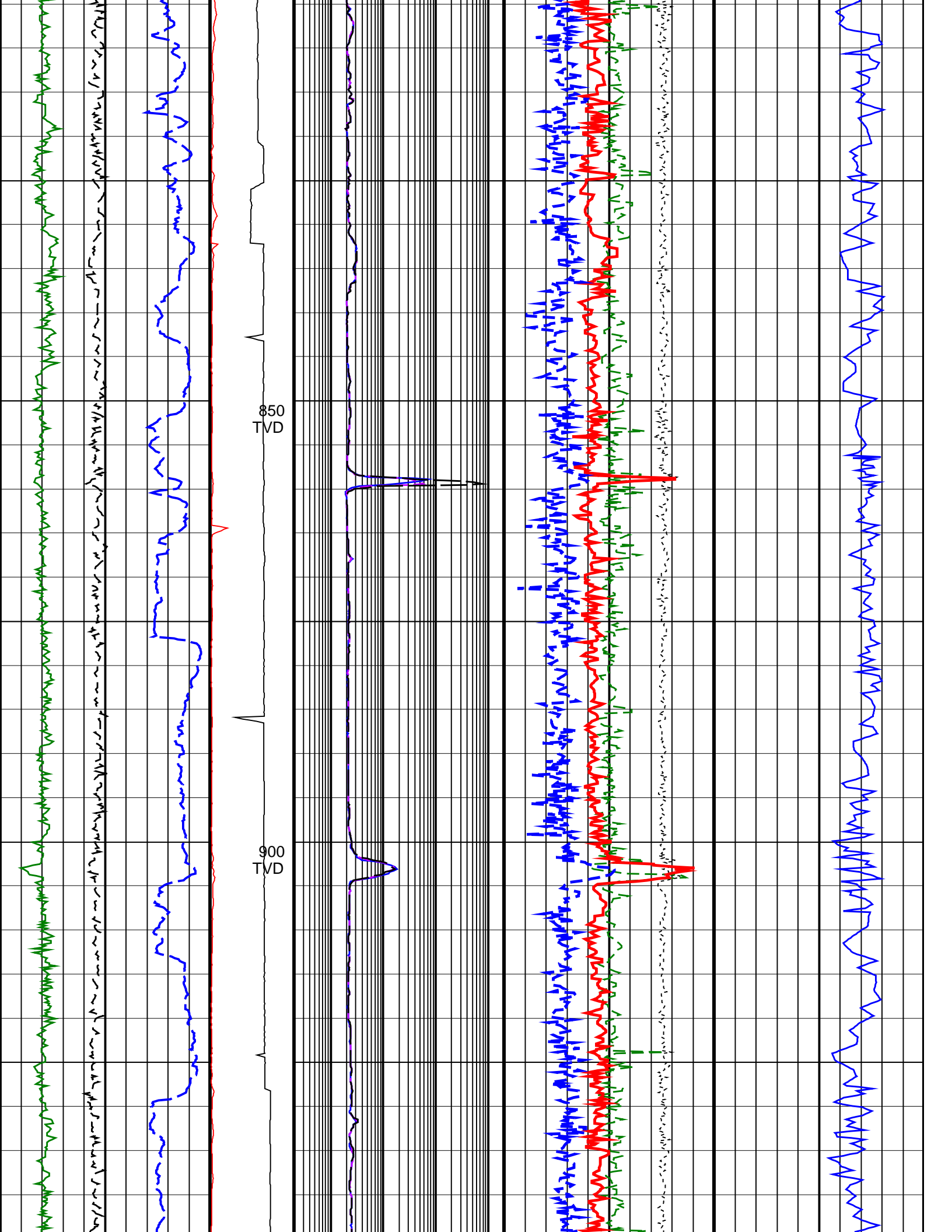
Vertical Scale: 1:500

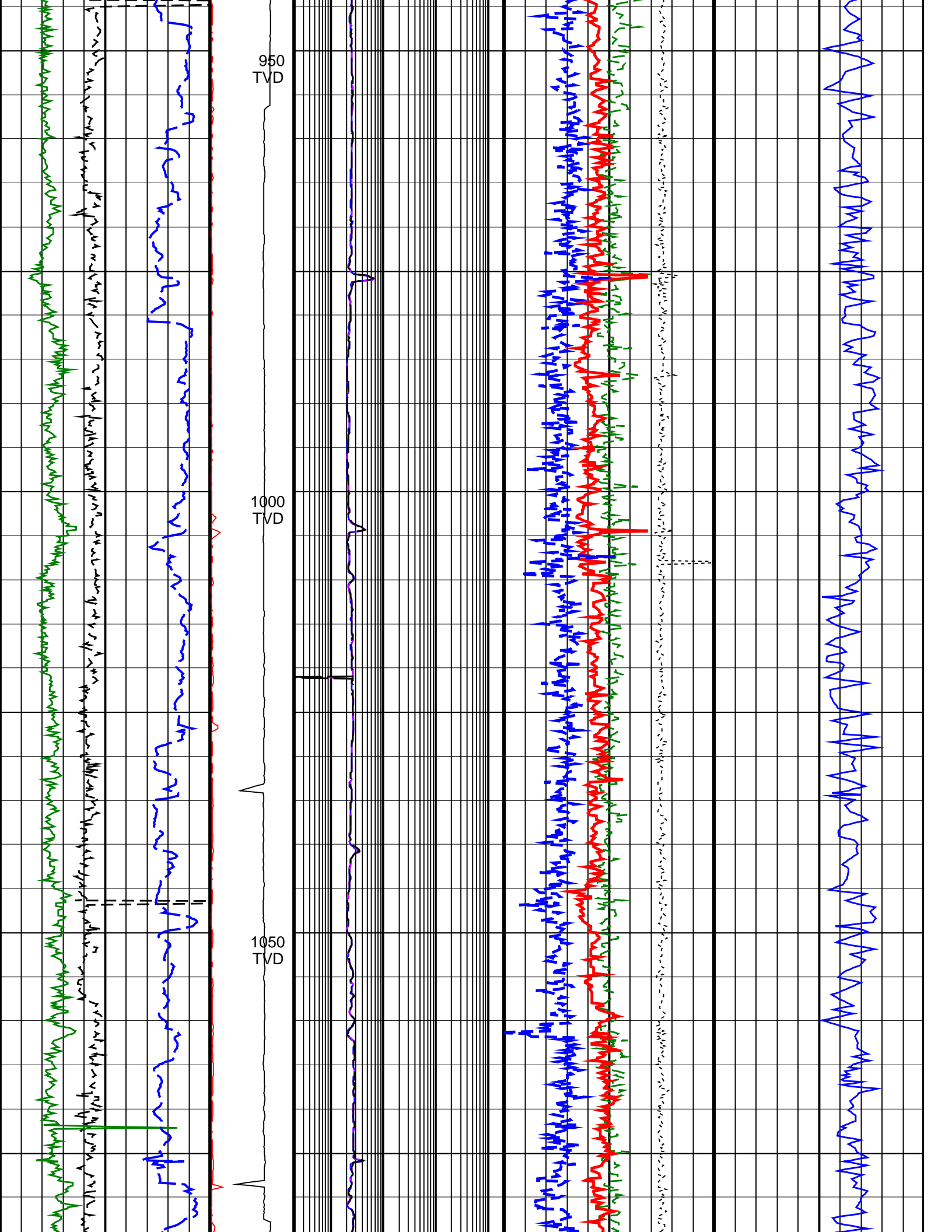
Graphics File Created: 23-May-2009 04:57

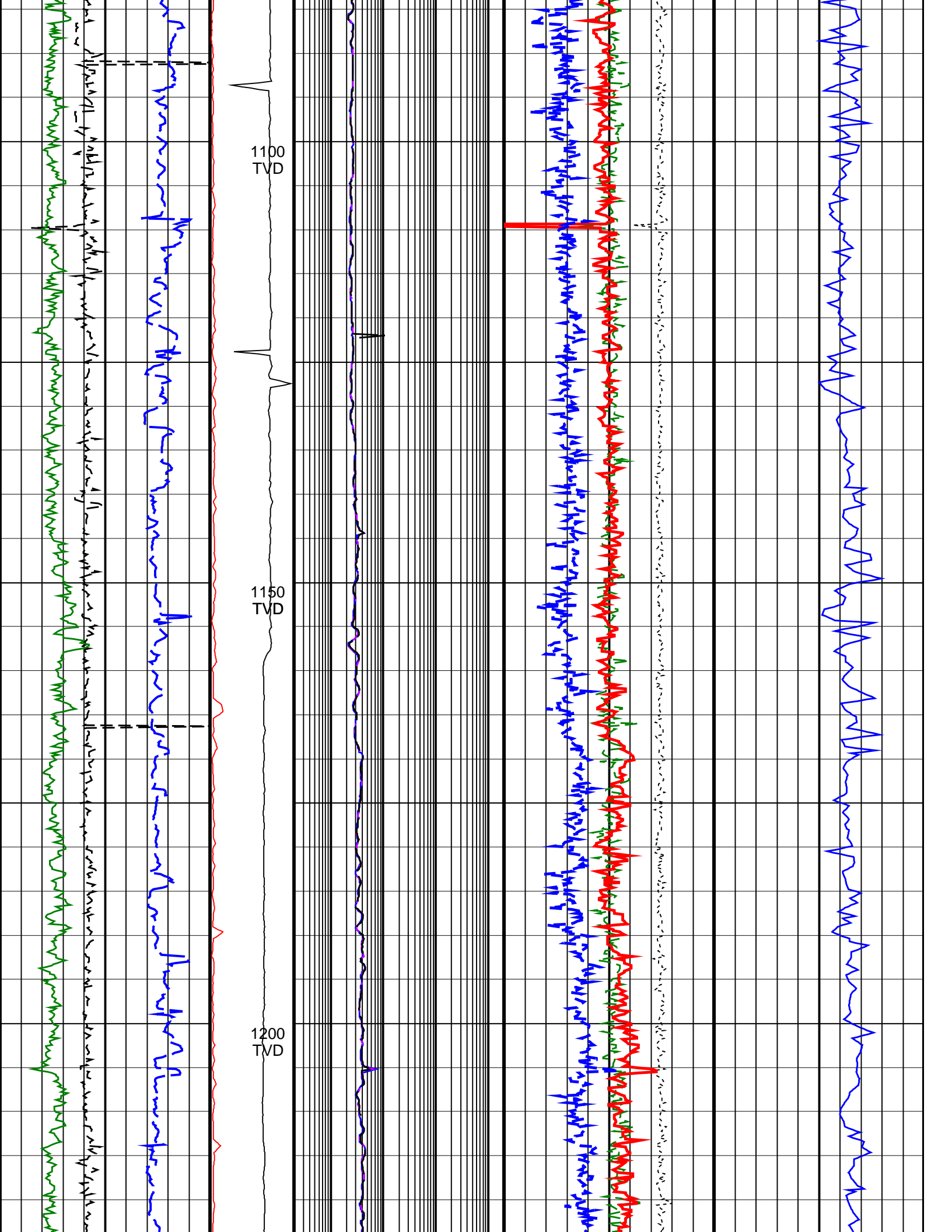
		ARC BHCorr Phase-Shift Resistivity 40-in. at 2 MHz, Real-Time (P40H_RT) 0.2 (OHMM) 2000	Thermal Neutron Porosity, Real-Time (TNPH_ADN_RT) 45 (PU) -15	
ARC Gamma Ray, Real-Time (ARC_GR_RT) 0 (GAPI) 200	MWD Collar RPM (CRPM_RT) (RPM) 0 250	ARC BHCorr Phase-Shift Resistivity 28-in. at 2 MHz, Real-Time (P28H_RT) 0.2 (OHMM) 2000	Bulk Density, Bottom, Real-Time Computed Downhole (ROBB_DH_RT) 1.85 (G/C3) 2.85	Photoelectric Factor, Bottom, Real-Time (PEB_RT) 0 (----) 10
Average Borehole Diameter, Real-Time (ADIA_ADN_RT) 6 (IN) 16	PKPK_RPM (Stick_RT) (RPM) 0 500	ARC BHCorr Phase-Shift Resistivity 16-in. at 2 MHz, Real-Time (P16H_RT) 0.2 (OHMM) 2000	Bulk Density Correction, Bottom, Real-Time Computed Downhole (DRHB_DH_RT) -0.75 (G/C3) 0.25	Delta-T Compressional, Real-Time (DTCO_RT) 600 (US/M) 100
ROP*5 (ROP5) 200 (M/HR) 0				

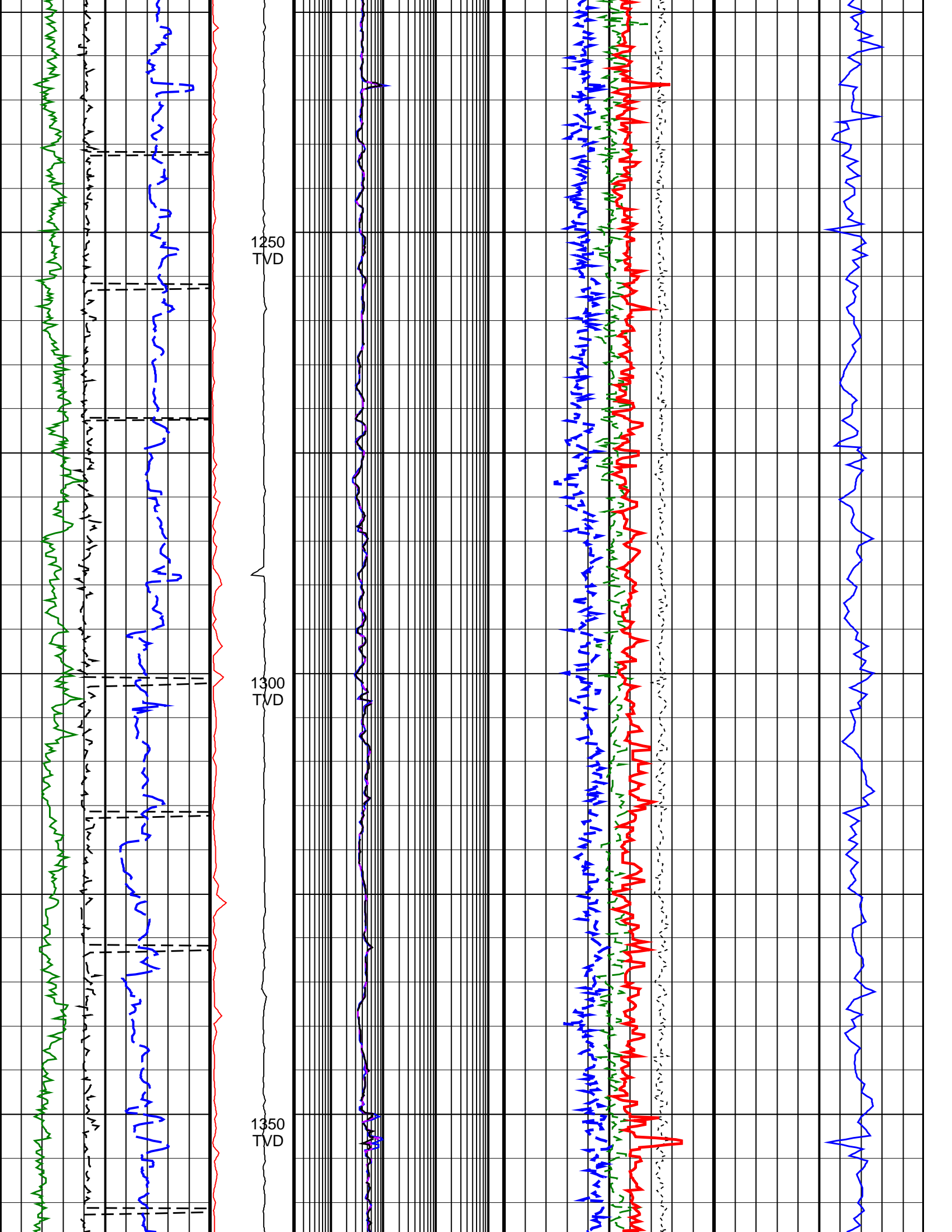


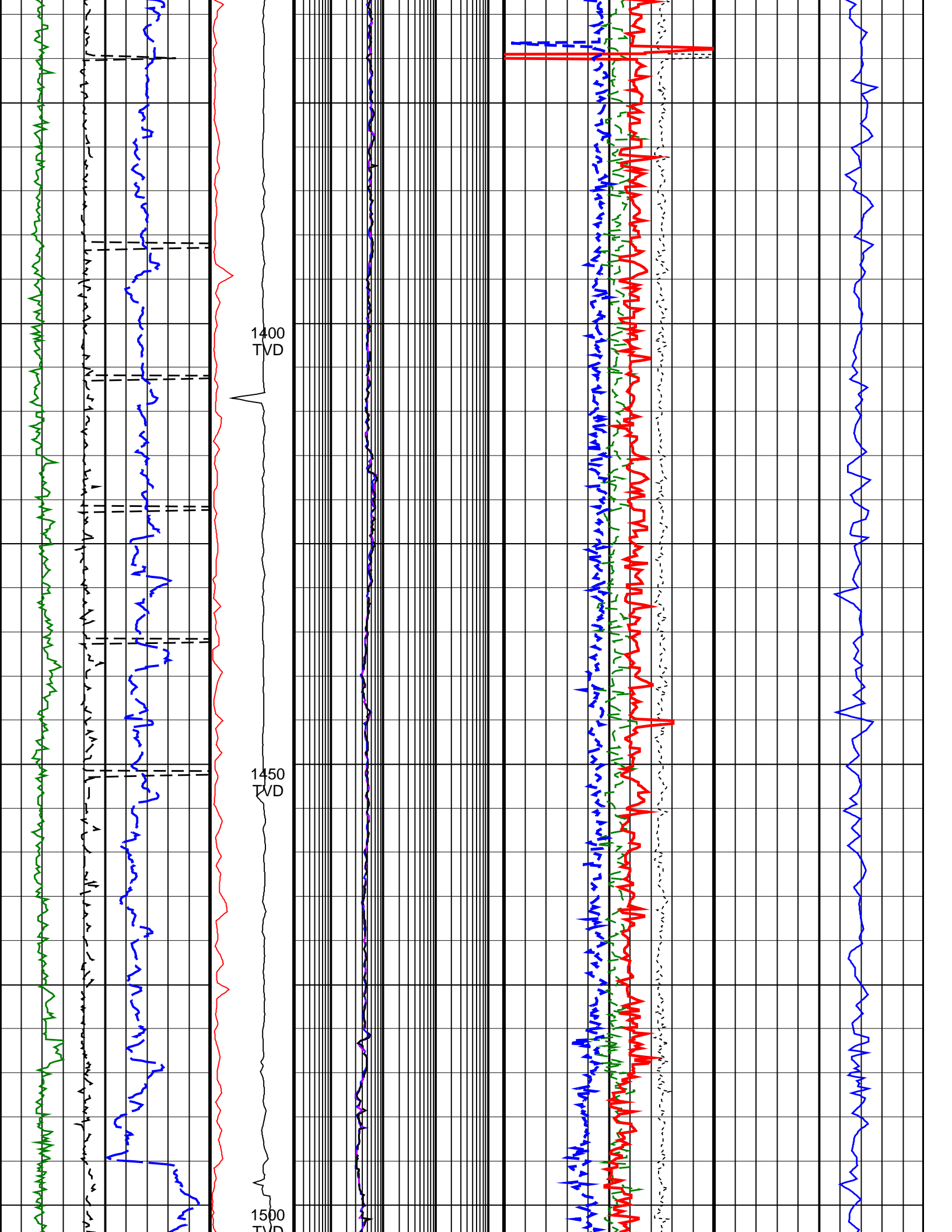








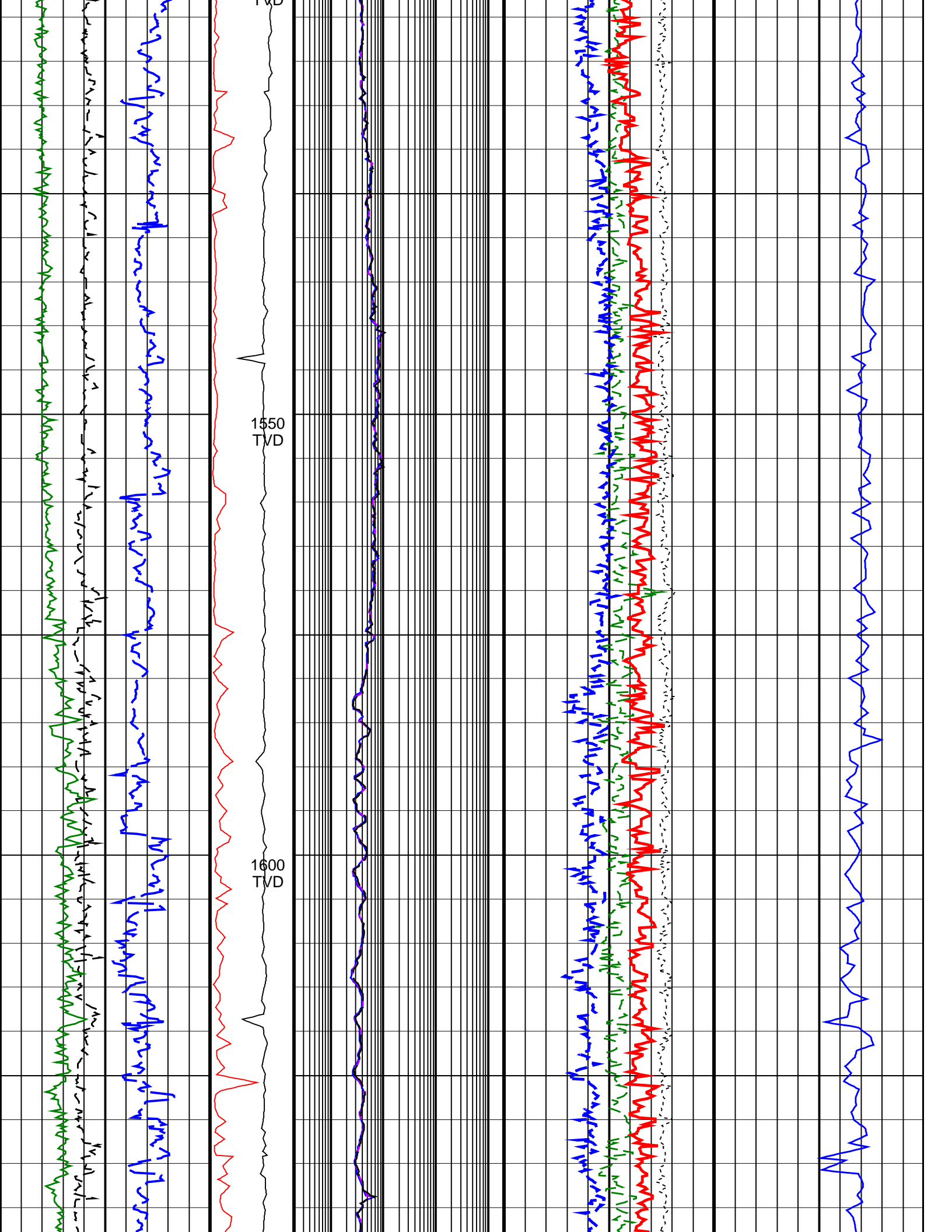


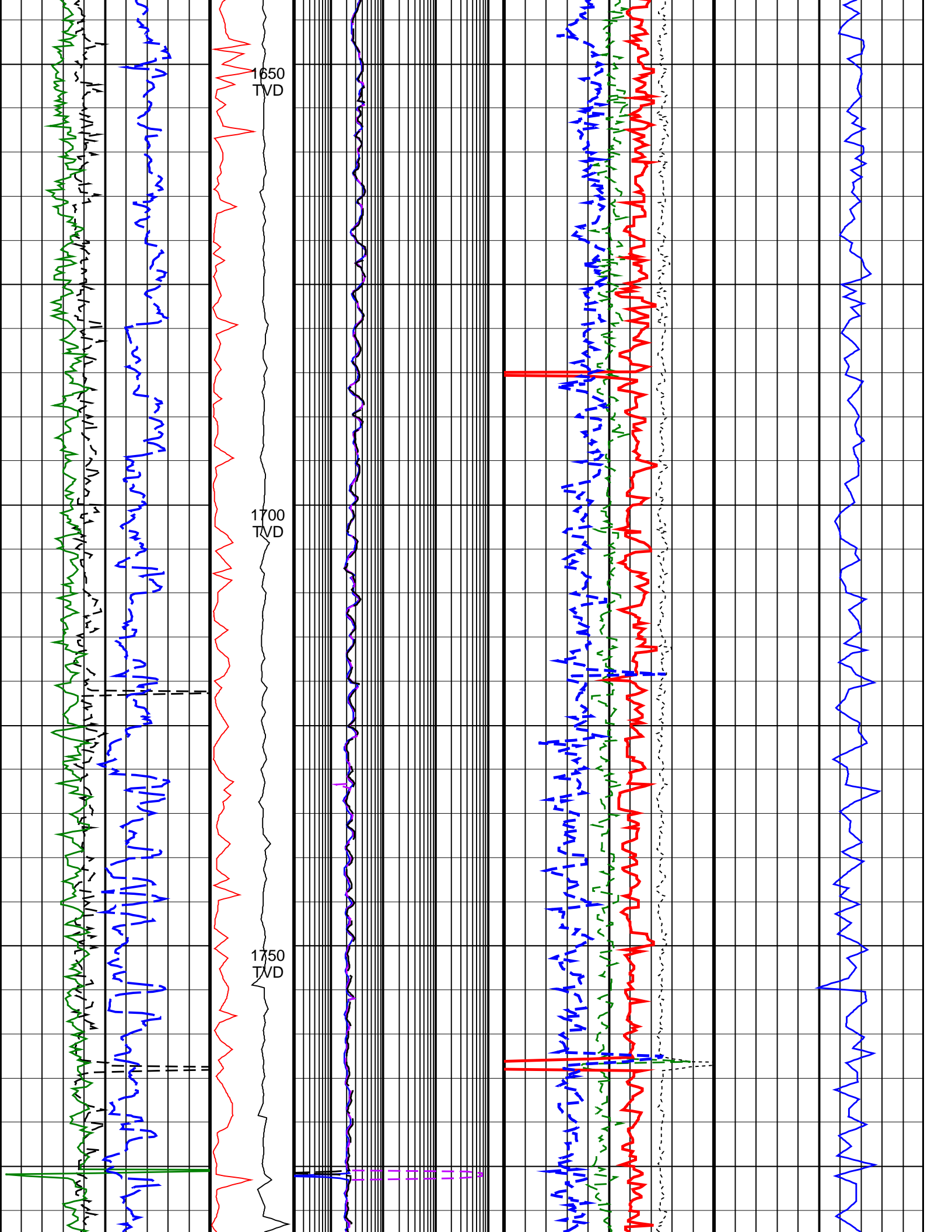


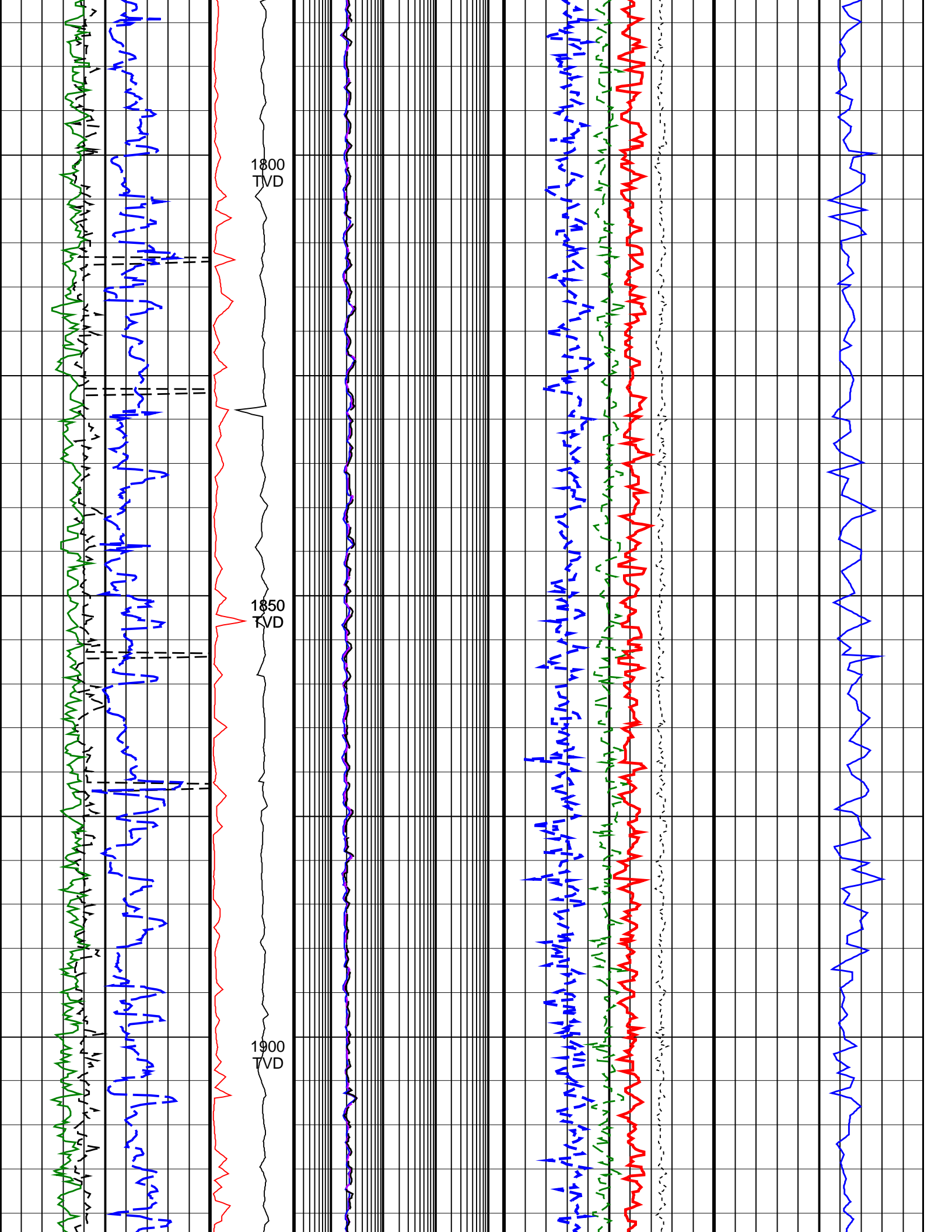
1400
TVD

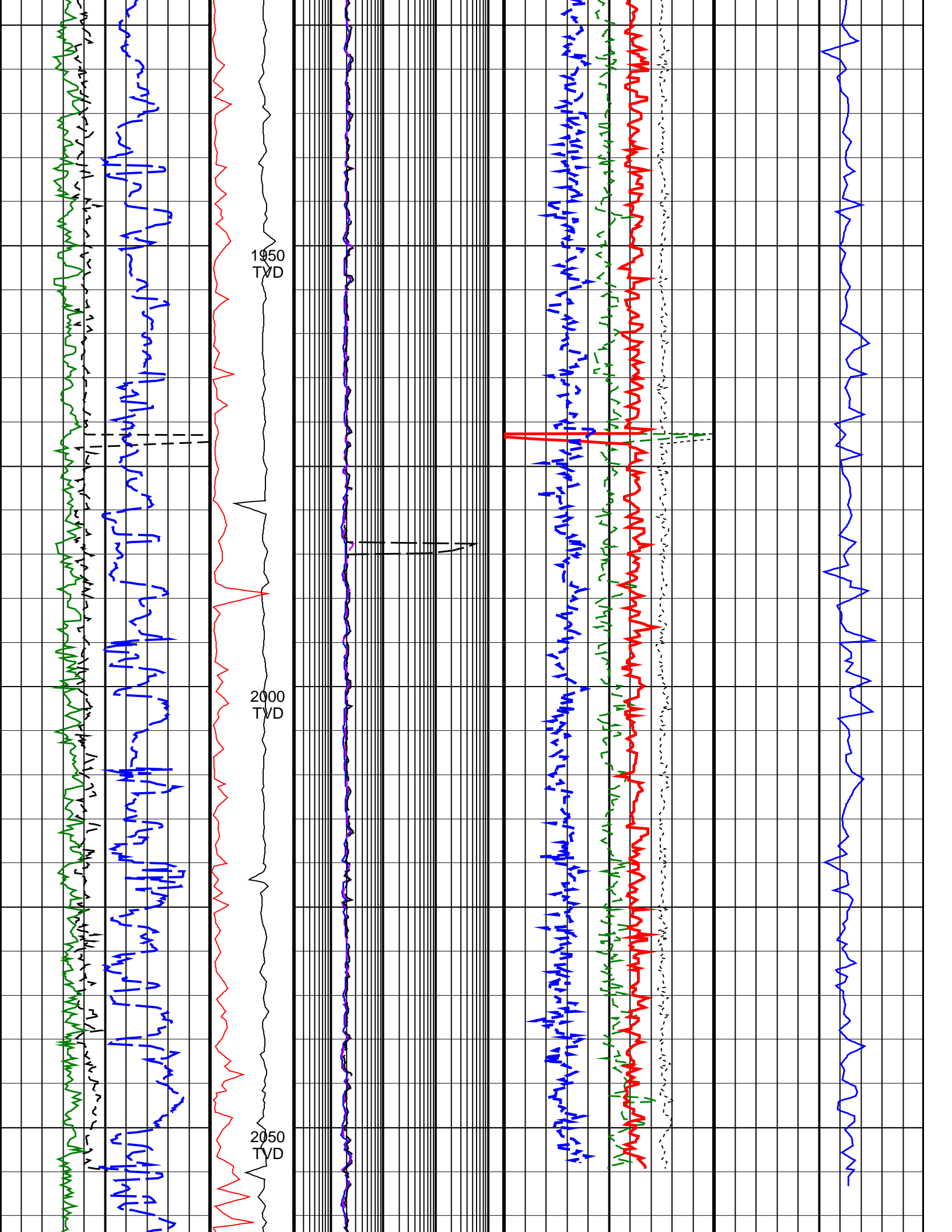
1450
TVD

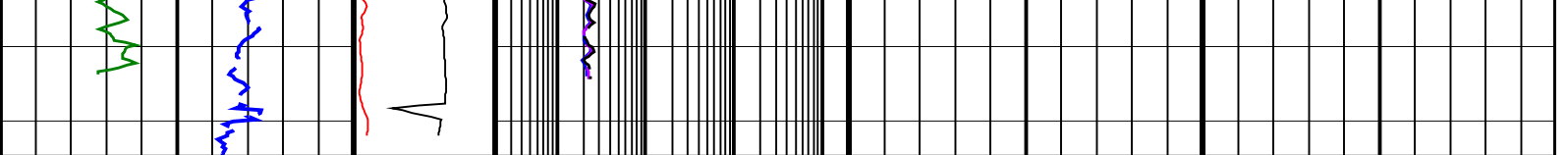
1500
TVD











<u>ROP*5 (ROP5)</u> (M/HR)	PKPK_RPM (Stick_RT) (RPM)	ARC BHCorr Phase-Shift Resistivity 16-in. at 2 MHz, Real-Time (P16H_RT)	Bulk Density Correction, Bottom, Real-Time Computed Downhole (DRHB_DH_RT)	Delta-T Compressional, Real-Time (DTCO_RT)
200 0	0 500	0.2 (OHMM) 2000	-0.75 (G/C3) 0.25	600 (US/M) 100
Average Borehole Diameter, Real-Time (ADIA_ADN_RT) (IN)	MWD Collar RPM (CRPM_RT) (RPM)	ARC BHCorr Phase-Shift Resistivity 28-in. at 2 MHz, Real-Time (P28H_RT)	Photoelectric Factor, Bottom, Real-Time (PEB_RT)	
6 16	0 250	0.2 (OHMM) 2000	0 (----) 10	
ARC Gamma Ray, Real-Time (ARC_GR_RT) (GAPI)		ARC BHCorr Phase-Shift Resistivity 40-in. at 2 MHz, Real-Time (P40H_RT)	Bulk Density, Bottom, Real-Time Computed Downhole (ROBB_DH_RT)	
0 200		0.2 (OHMM) 2000	1.85 (G/C3) 2.85	
			Thermal Neutron Porosity, Real-Time (TNPH_ADN_RT) (PU)	
			45 (PU) -15	

IDEAL Version: ID14_0C_12
IDF